

Intelligent Data Platform

Harness the transformative power of data across hybrid computing environments.

The challenge

Data is generated in unthinkable volumes:

From the web, social media, mobile devices, sensors, connected products



It must be stored, managed, secured, and accessed in hybrid cloud computing environments:



Edge devices



Data centers



Cloud

This scale and complexity:



Drives up costs



Extends outages and periods of performance degradation



Fuels firefighting



Makes data unavailable where needed

As a result



Intelligence changes everything

An intelligent data platform:

Uses AI to manage infrastructure



Resolves **86%** of storage-related problems automatically²

Reduces storage infrastructure costs up to³ **30%**

Reduces storage operational expenses by⁴ **79%**

Cuts through hybrid complexity

Discovers where data is created, stored, and used

Shows you where to position data for best outcomes

Reduces cloud storage and transfer costs⁵

20X

Manages data throughout its lifecycle

- Eliminates silos
- Enables visibility
- Eliminates duplication and inconsistency

Harnesses the power of the coming data explosion

- Delivers data to the right place at the right time
- Extracts the value the business expects
- Fulfills the promise of the Internet of Things

HPE Intelligent Data Platform

The HPE Intelligent Data Platform delivers an always-on, always-fast experience. It enables faster application development and innovation while creating more agile service delivery for your critical workloads.

- It's AI driven—so you innovate, not administrate.
- It's built for cloud—so you can run any application, anywhere.
- It's delivered as a service—so you can be your own service provider.



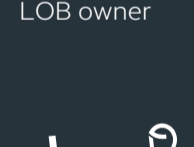
LOB owner



VM admin



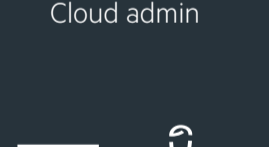
Cloud admin



DevOps



Data scientist



Infrastructure admin

Workload automation



Cloud data management

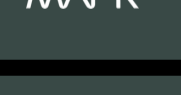


Context-aware

Global Intelligence Engine



Predictive analytics



Workload fingerprint

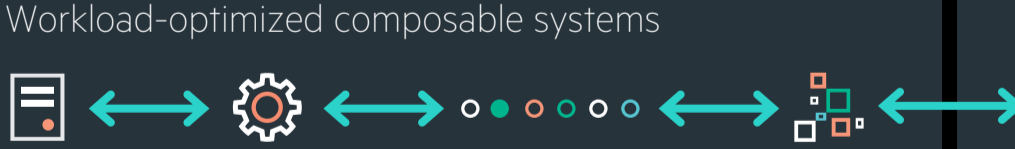


Global learning



Recommendations

Workload-optimized composable systems



Mission critical

General purpose

Secondary

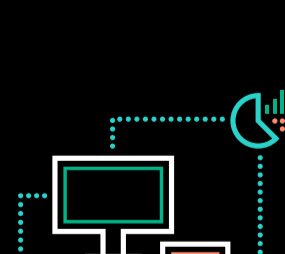
Big data / AI

Any cloud

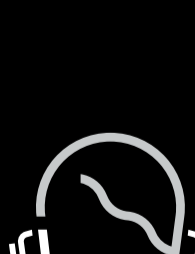


Cloud Data Services

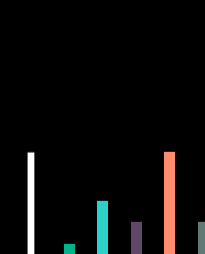
Intelligent Data Platform from HPE is part of a total experience for enterprise hybrid IT.



IT financing and investment solutions to drive your digital transformation



HPE Pointnext support and advisory services to accelerate your journey



HPE GreenLake enabling pay-per-use economics right in your own data centers

Capture the transformative power of data.

Download the white paper

Learn more about intelligent storage solutions from HPE: hpe.com/intelligentdata

¹ IDC, "Data Age 2025: The Evolution of Data to Life-Critical," David Reinsel, John Gantz, and John Rydning, April 2017
² HPE, "Redefining the standard for system availability," August, 2017
³ A commissioned study conducted by Forrester Consulting, "The Total Economic Impact™ of HPE GreenLake Flex Capacity," May 2018.
⁴ ESG, "Assessing the financial impact of HPE InfoSight predictive analytics," September 2017
⁵ Illustrates potential savings based on customer surveys. HPE does not provide financial advice.

© Copyright 2019 Hewlett Packard Enterprise Development LP. The information contained herein is subject to change without notice. The only warranties for Hewlett Packard Enterprise products and services are set forth in the express warranty statements accompanying such products and services. Nothing herein should be construed as constituting an additional warranty. Hewlett Packard Enterprise shall not be liable for technical or editorial errors or omissions contained herein.