

Enterprise scale with HPE OneView

HPE OneView Global Dashboard

Using HPE OneView Global

Dashboard, IT administrators can:

- **Simplify compliance**—Easily identify deviations from your current firmware baseline to accelerate configuration compliance and consistency.
- **Understand resource status in seconds with a single dashboard**—A unified view across your HPE infrastructure for better visibility, allowing for more informed and faster decision-making.
- **Navigate with a single click and Single Sign-On**—In context, launch of managed resources means there's no need to navigate between appliances.
- **Easily access reports on inventory and health status**—Integrated reporting allows you to see server hardware inventory, including associated firmware versions.

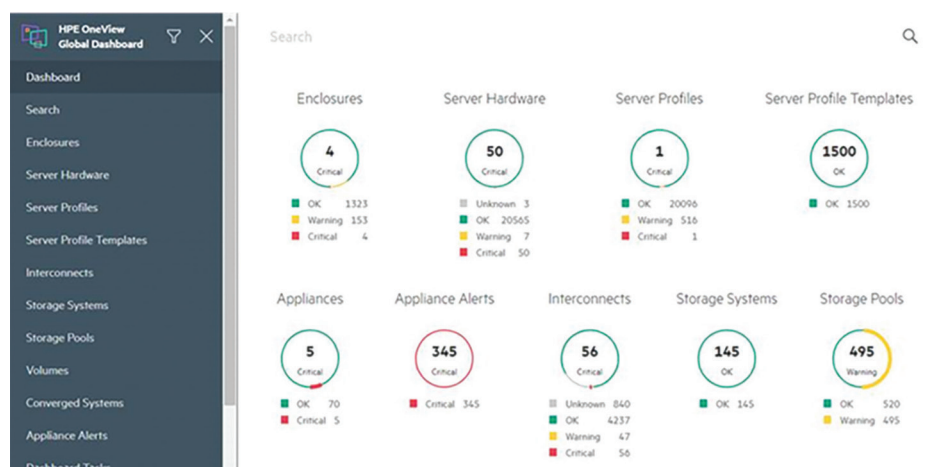


Figure 1. HPE OneView Global Dashboard

Proven path to composability

To succeed in today's fiercely competitive marketplace, your business must be ready to capitalize on every opportunity. Meeting that goal requires fast IT service delivery, backed by a simple, highly efficient IT infrastructure with automated workflows.

HPE OneView delivers the breakthrough management capabilities you need for success. This proven infrastructure automation engine is built with software-defined intelligence and a unified API. Designed to support infrastructure composability, HPE OneView enables you to configure, monitor, update, and repurpose IT resources with a single line of code—enabling your IT staff to respond to changing application needs quickly and efficiently.

Unifying IT management

Today, the HPE OneView Global Dashboard takes composable infrastructure management to new levels of simplicity and efficiency.

The Global Dashboard builds on the core HPE OneView capabilities by adding visibility and reporting across multiple appliances in different geographic regions.

With the HPE OneView Global Dashboard, your business benefits from the ability to:

- See a unified view of health, alerting, and key resources managed by HPE OneView, including HPE servers and storage.
- Troubleshoot alerts and view core inventory data across as many as 75 HPE OneView appliances or HPE Synergy Composers, 150 HPE Hyper Converged, and 25 HPE SimpliVity clusters.
- Receive instant search results for devices of interest.
- Use Single Sign-On to access powerful device-level lifecycle management with a single click—no need to navigate between appliances.

What's new?

The latest release of **HPE OneView Global Dashboard** extends the advanced capabilities of the previous releases with the following enhancements:

Scalability enhancements

- Supports up to 75 appliances (HPE OneView or/and HPE Synergy Composer) and up to 20,000 servers

IPv6 support

- Users can access HPE OneView Global Dashboard and HPE OneView appliances through the HPE OneView Global Dashboard using IPv6

Reports

- Enhanced Enclosure (FW) Inventory Report shows firmware versions for HPE Synergy Frame Link Module and HPE BladeSystem c7000 Onboard Administrator

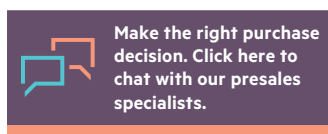
Additional hardware support

- Displays Interconnect Inventory and Health Status
- Displays additional server hardware information (memory, device, local storage)

Get more from management

Contact your HPE representative today to learn more about the benefits of using HPE OneView with the Global Dashboard to simplify and unify global scale management of your IT infrastructure.

Learn more at
hpe.com/info/oneview
hpe.com/products/ovglobaldashboard



 **Share now**

 **Get updates**

Single view

Regardless of where your data centers are located—across town or across the globe—HPE OneView Global Dashboard provides a single, unified view of your HPE infrastructure resources. Not only can you view the health of HPE servers, profiles, and enclosures (up to 75 appliances), but you can also view across multiple versions of HPE OneView, including, 3.1, 4.0, 4.1, 4.2, and HPE Synergy Composer.

The Global Dashboard also:

- Aggregates critical activities from multiple appliances into a single feed, so you can readily identify problems with your monitored hardware and promptly resolve them.
- Generates reports for all monitored assets (including firmware versions), so you can view inventory and customize the reports to view what you want.

Simplified management and navigation

Offering quick access to infrastructure resources, HPE OneView Global Dashboard provides links to specific pages on your HPE OneView appliance, where you can drill down and perform additional action.

To further simplify management, Single Sign-On puts approved users just one click away from powerful device-level lifecycle management while also removing the need to authenticate for different appliances.

By building the Global Dashboard into HPE OneView, you can monitor your HPE BladeSystem c-Class, HPE Synergy, HPE ProLiant DL/ML servers, HPE Hyper Converged 380, HPE SimpliVity, HPE Apollo Systems, HPE 3PAR StoreServ, HPE Composable Cloud for ProLiant DL, HPE StoreVirtual storage, and HPE Nimble Storage as one infrastructure.

In addition, Global Dashboard is easy to set up because it is a virtual appliance supported on Microsoft® Hyper-V®, KVM, and VMware vSphere® Hypervisors.

Easy access to reports and health status

There's no need to wait for day-end or month-end reports. HPE OneView Global Dashboard provides easy access to real-time reports on inventory and the health status of your HPE infrastructure.

For example, the compliance report makes it easy to identify which resources are not at your current firmware baseline, helping to accelerate configuration compliance and consistency.

In addition, integrated inventory reporting allows you to see server hardware inventory, including the associated server and HPE iLO firmware versions. You can ensure there are no duplicate resource IDs in your environment.

The RESTful API allows users to write scripts to easily access inventory, health status, and alerting information consolidated from HPE OneView appliances, HPE Synergy, and HPE SimpliVity systems.

Faster, better decision-making

Offering a near-real-time Smart Search feature, HPE OneView Global Dashboard provides an at-a-glance view of system health status. It also enables you to search for any attribute associated with a resource. The Global Dashboard's Smart Search feature:

- Provides access to devices of interest across data centers in seconds, enabling greater visibility and helping you make faster decisions.
- Allows you to search for any attribute associated with a resource to quickly find and navigate to the desired item.
- Includes logical grouping to enable you to define groups, and then use them to scope visible resources.
- Enables you to easily filter the view to the set of resources that has problems, helping you to focus on only the items that need remediation. In addition, you can now customize the dashboard to show only the resources of interest for a quick view.
- Enables ability to schedule, generate, and forward reports for inventory, health, contracts and warranties, and HPE OneView licensing.

© Copyright 2016–2019 Hewlett Packard Enterprise Development LP. The information contained herein is subject to change without notice. The only warranties for Hewlett Packard Enterprise products and services are set forth in the express warranty statements accompanying such products and services. Nothing herein should be construed as constituting an additional warranty. Hewlett Packard Enterprise shall not be liable for technical or editorial errors or omissions contained herein.

Microsoft is either a registered trademark or trademark of Microsoft Corporation in the United States and/or other countries. VMware vSphere Hypervisor is a registered trademark or trademark of VMware, Inc. in the United States and/or other jurisdictions. All other third-party marks are property of their respective owners.

4AA6-7303ENW, June 2019, Rev. 10

